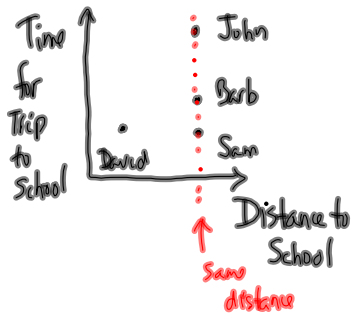
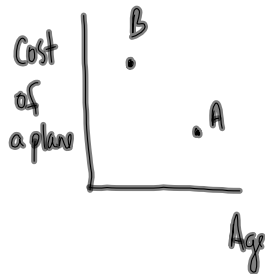


# Interpreting Points + Graphs



David walks to school.  
 One other student was walking,  
 one was driving and one was  
 biking.

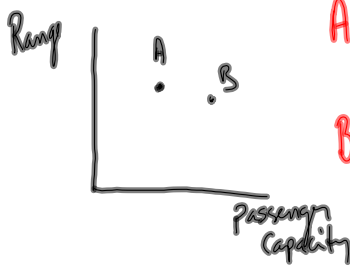
John: walking (longest time)  
 Sam: driving (shortest time)  
 Barb: biking (medium time)



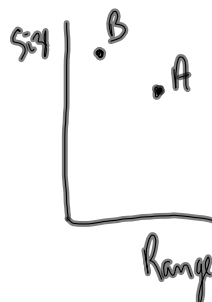
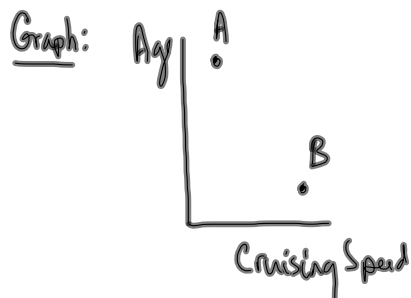
A is the older plane, it has the lower cost  
 B is the newer plane, it has the higher cost  
 (the older the plane, the less it costs)



A is the smaller plane, it has the lower cruising speed  
 B is the larger plane, it has the high cruising speed  
 (the smaller the plane, the lower the cruising speed)

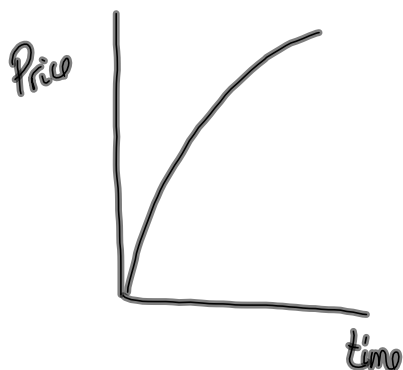


A has the smaller passenger capacity,  
 and longer range.  
 B has the larger passenger capacity +  
 shorter range.  
 (A large passenger capacity has  
 a shorter range)



Sketch the following situations

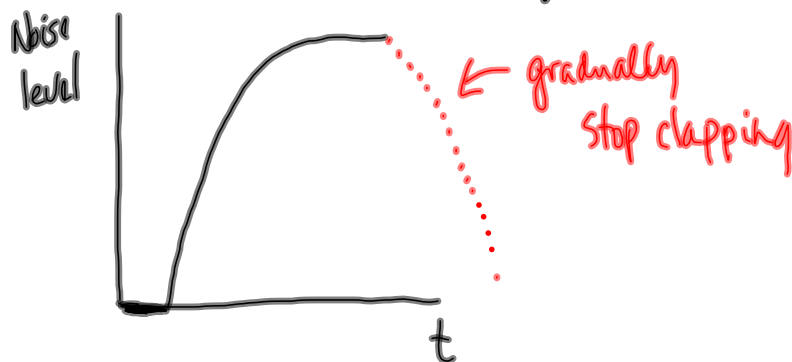
Prices<sup>y</sup> are now rising more slowly than at any other time during the last year. <sup>x</sup>  
 (slope gets smaller)



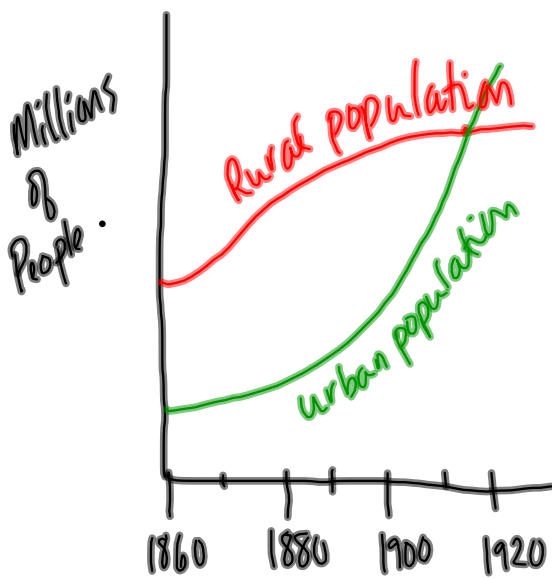
Bob likes cold milk or hot milk, but does not like luke-warm milk. <sup>x</sup>



After a concert there was a stunned silence. Then one person in the audience began to clap. Gradually those around joined in and soon everyone was clapping.



## Reading + Understanding Graphs



Population of the US 1860-1920

Which statement fits the graph?

- X a) Rural population declined after 1910
- X b) Many Americans migrated from urban to rural areas
- X c) Immigration played a limited role in urban growth
- ✓ d) The population of the cities grew at a faster rate than that of the rural areas

To Do:

- ① Practice Sheet
- ② p 90/1+2